

Palm Tree Cottage

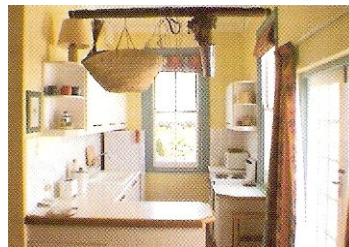
23 Forest Hill Simon's Town

Managed by



Palm Tree is a charming Victorian self-catering cottage with great sea and mountain views.

It is located in a quiet cul-de-sac within easy walking distance of the village, beaches and penguins.



Palm Tree has two double bedrooms, two bathrooms, a kitchen with microwave oven and dishwasher, sitting room with Hi-Fi and TV, dining room and has a washing machine for your laundry.

Contact:

Chris: 083 292 5313

Email: seasprayaccom@tiscali.co.za